

LODGE ACCOMMODATION DESCRIPTION 2010

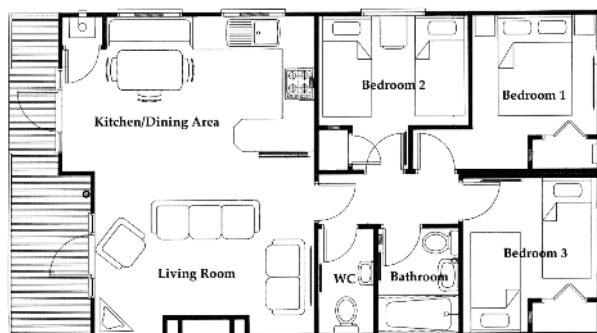
All our lodges are graded 4 Star by the English Tourism Council and we are inspected every year. They have full gas central heating & double-glazing throughout with radiators in all rooms & are insulated to a very high standard for year round use. Outside, the lodges have a veranda & picnic benches. Each lodge is fully furnished & all bed linen is provided (apart from cot linen), & the beds made up with duvets & pillows ready for arrival. Bath towels, tea towels & oven gloves are supplied to each lodge, free of charge.

The kitchens are equipped with modern fitted kitchen units, full size oven, gas hob, microwave, toaster, kettle, coffee maker, steam iron, ironing board, vacuum cleaner & an excellent range of crockery, cutlery, kitchen tools, stainless steel saucepans, etc. Cots & high chairs are supplied free of charge to the lodges, if requested at time of booking. All of the lodges have wireless broadband internet access, widescreen colour TV, DVD player & free to air TV Channels. Use of Gas & Electricity is charged by coin meter. Smoking is not permitted in any of our accommodation.

If you have any difficulty with mobility, please discuss the suitability of the accommodation with us at the time of booking.

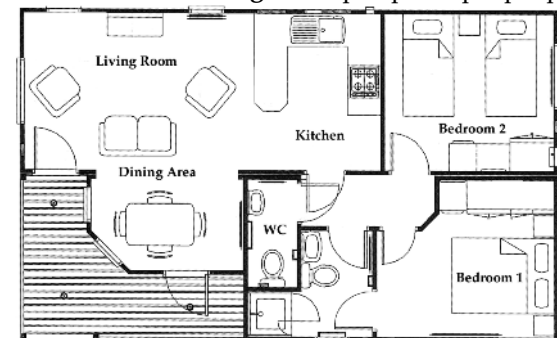
3 bedroom Pine Lodge - sleeps up to 6 people plus cot.

The lodges are equipped to an exceptionally high standard with heating in all rooms by radiators, plus an additional electric "wood burner" style fire in the lounge. The large farmhouse style kitchen table has ample seating for six people. The lounge is furnished either with either a 3-piece suite or two 3-seater settees, & coffee table. Bedroom 1 is furnished with double bed, built in wardrobe & bedside cupboards. Bedrooms 2 & 3 have two single beds, with built in wardrobes & cupboards. The bathroom has a full size bath, with shower fitted over & a wash basin & toilet.



There is also a second cloakroom, with h& basin & WC. There are three steps up to the veranda & entrance into the lodge & parking is available alongside.

2 bedroom Pine Lodge - sleeps up to 4 people plus cot.



These lodges are fitted & furnished to exactly the same high standard as the 3 bedroom pine lodges. They have a large lounge & kitchen/diner, area overlooking the wood decked veranda. The farmhouse style kitchen table has ample seating for four people. Heating is by radiators, plus an additional electric "wood burner" style fire in the lounge. Bedroom 1 is furnished with double bed, built in wardrobe & bedside cupboards. Bedroom 2 has two single beds, with built in wardrobe & cupboards. The bathroom has a shower, washbasin & WC. There is also a second cloakroom, with h& basin & WC.

The lounge is furnished with a 3-piece suite & coffee table. These lodges are arranged in a small group of three, with steps up to them from the parking area. Each lodge has three steps up to the veranda & entrance into the lodge & parking is available within 30 metres.

2 bedroom Country Lodge - sleeps up to 4 people plus cot.

These modern bungalows have gas central heating & double glazing throughout. The kitchen/diner has a wide range of wall & floor units, a full size electric fridge/freezer, built in gas hob & electric oven, microwave, farmhouse style kitchen table with seating for four people. The lounge is furnished with a large black leather settee & a nest of tables. Bedroom 1 is furnished with mahogany double bed, plus matching dressing table & cupboards & built-in wardrobe. Bedroom 2 has two 3 foot wide single pine beds, with pine chest of drawers, cupboards & built in wardrobe.



The modern bathroom has a full-sized bath, with shower fitted over, washbasin & toilet. There is also a second cloakroom, with hand basin & WC. The bathroom has a shower, washbasin & WC, a second cloakroom, has a hand basin & WC. There is one step up to the veranda & one step up to the lodge doors, parking is available alongside.